



NATIONAL CERTIFICATES FOR

Roadmarking



InfraTrain
New Zealand



Developed in partnership with
the roadmarking industry



The New Zealand
Roadmarkers
Federation Inc



QUALIFICATIONS FOR ROADMARKING

Roadmarkings play a vital role in guiding road users safely and warning them of hazards. Roadmarking contractors carry out work for government and local authorities, applying and maintaining the markings on many thousands of kilometres of state highways and local roads.

Roadmarking involves technical knowledge of application systems and materials, the set-out of road markings, and specialist skills to safely control traffic.

InfraTrain New Zealand provides the opportunity for recognition of these skills and knowledge, with national qualifications that can be gained on the job.

Great importance is placed on health and safety of workers as roadmarking involves handling hazardous materials and is generally carried out in live traffic situations. These qualifications therefore incorporate best practice in materials handling and traffic control.

The qualifications are also aligned with the traffic management requirements of the NZ Transport Agency and Local Government.

Our qualifications have been developed in partnership with the roadmarking industry and there is a qualification to suit all levels of roadmarking work in the industry, including unit standards for the testing of pavement marking.

Qualifications are subsidised and there is no need for a student loan because learning is done on the job. There is the added advantage that qualifications can be gained anywhere in the country and can be started at any time during the year.



INDUSTRY RECOGNISED

InfraTrain has developed these Roadmarking qualifications in conjunction with the industry to meet the requirement for national certificates which are up to date and relevant to business needs.

Industry technical experts have provided advice on the unit standards and the structure of the qualifications. They are endorsed by The New Zealand Roadmarkers Federation Inc, the industry organisation representing roadmarkers throughout the country.

"Having staff with NZQA recognised qualifications demonstrates a commitment to raising standards in the roadmarking industry. Road Controlling Authorities place a high level of reliance on the skill level of their roadmarking contractors. Qualifications demonstrate that a contractor's employees have undertaken appropriate training, particularly for health, safety and environment compliance and traffic control. An investment in training will be good for you, your staff and your future business".

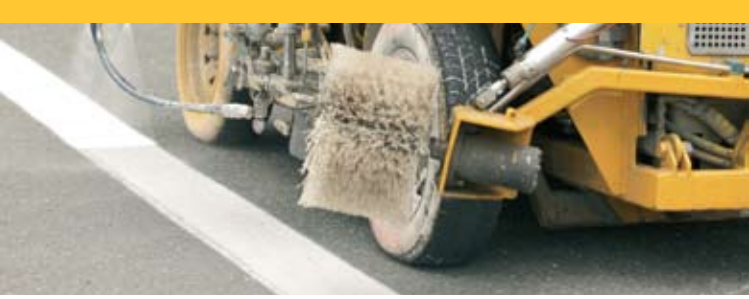
Alister Harlow

EXECUTIVE DIRECTOR, THE NEW ZEALAND ROADMARKERS FEDERATION INC

"Roadmarking is now a recognised trade with national standards and qualifications accessible to all. Whether you are new in the industry or have been in the industry for a number of years, there is something to be learned, and these qualifications will recognise that you have achieved established industry standards".

Grant Hartley

GENERAL MANAGER, SPRAY MARKS ROADMARKING LTD

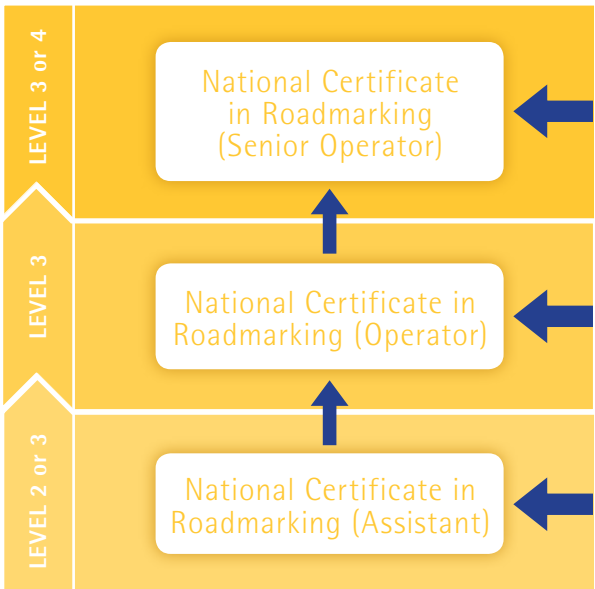


QUALIFICATION PATHWAY

Each of InfraTrain's Roadmarking qualifications is designed to be stand-alone and can be entered at any level – there is no need to do the lower level qualification as a prerequisite.

However, the qualifications are structured to provide a pathway for people wanting to progress from Assistant to Senior Operator level (as shown in the diagram).

The qualifications also recognise that company work practices and job roles differ within the industry. Flexibility is therefore provided with some core compulsory standards and optional strands common between qualifications (refer to the qualifications section for details).





NATIONAL CERTIFICATE IN ROADMARKING (ASSISTANT)



This is the recommended qualification for people working in a support role in a roadmarking crew.

The qualification comprises compulsory unit standards which cover:

- Basic knowledge of roadmarking materials
- Roadmarking plant and processes
- Roadmarking assistant tasks
- Workplace communication
- Health, Safety and Environment requirements of roadmarking
- Approved handler requirements of the HSNO Act 1996
- Class 1 driver licence with dangerous goods endorsement
- Knowledge and practice for carriage of dangerous goods
- Responses to spillage, leakage or loss of load
- Response to fire incidents
- First Aid
- Traffic Controller for low volume and Level 1 roads

The qualification is completed by selecting from elective Health, Safety and Environment unit standards.

In addition, one or more optional strands can be completed to suit job requirements.

- Piloting
- Thermoplastics
- Raised Pavement Markers
- Transport

This qualification may lead on to the *National Certificate in Roadmarking (Operator)*, although it is not a prerequisite for this.

Some of the core compulsory standards, as well as the Raised Pavement Markers and Transport strands are also available in the *National Certificate in Roadmarking (Operator)* qualification.



NATIONAL CERTIFICATE IN ROADMARKING (OPERATOR)



This qualification recognises the skills and knowledge of a roadmarking operator who mainly does remark work using an A-type or B-type applicator.

The qualification comprises compulsory unit standards which cover:

- Roadmarking specifications
- Industry calculations
- Quality records
- Location, set out and management of simple roadmarking sites
- Quality assurance inspections and sampling
- Checks and maintenance of roadmarking plant and equipment
- Class 1 driver licence with dangerous goods endorsement
- Knowledge of hazardous substances requirements
- Responses to spillage, leakage or loss of load
- Response to fire incidents
- First Aid
- Traffic Controller and Site Traffic Management Supervisor (STMS) for low volume and Level 1 roads

The core elective section provides choice from a wide selection of additional Health, Safety and Environment unit standards.

The qualification is completed with a strand in either A-type or B-type applicators to suit company operations.

In addition, there are optional strands that recognise additional skills and knowledge a roadmarking operator may require. One or more of the following strands can be completed to suit job requirements:

- Raised Pavement Markers
- Temporary Traffic Management on Level 2 and 3 Roads
- Transport

The qualification builds on the *National Certificate in Roadmarking (Assistant)*, however this is not a prerequisite and the qualification can be entered directly. Some of the core compulsory unit standards, as well as the Raised Pavement Markers and Transport strands are common between the two qualifications.

People completing this qualification may choose to progress to the *National Certificate in Roadmarking (Senior Operator)*, which also offers the above Temporary Traffic Management strand.



NATIONAL CERTIFICATE IN ROADMARKING (SENIOR OPERATOR)



This qualification recognises the skills and knowledge of a roadmarking senior operator. A skilled operator will be able to carry out both remark and new work using an A-type or B-type applicator.

The qualification comprises compulsory unit standards which cover:

- Knowledge of materials, processes and specifications for complex roadmarking work
- Roadmarking maps and plans for plant operation
- Complex industry calculations
- Set out of complex roadmarking work
- Supervision and management of projects
- Managing Health, Safety and Environment requirements
- Sustainable environmental management practices

The core elective section provides choice from a wide selection of additional Health, Safety and Environment unit standards. The qualification is completed with a strand in either Long-Life Products or Paint Marking.

In addition there are optional strands that recognise additional skills and knowledge a Senior Roadmarking Operator may require. One or more of the following strands can be completed to suit job requirements:

- Temporary Traffic Management on Level 2 and 3 Roads
- Testing Pavement Marking
- Testing NZTA/NZRF T/8
- Testing NZTA/NZRF T/12

This qualification builds on the *National Certificate in Roadmarking (Operator)* however this is not a prerequisite and the qualification can be entered directly.



BENEFITS FOR EMPLOYERS

- Nationally recognised qualifications
- Qualifications developed in partnership with industry
- Work-based training
- Recognition of existing experience with national qualifications
- Subsidised training
- Support and guidance available from InfraTrain
- Covers Health and Safety requirements
- Reduces risk and may reduce liability in event of an accident
- May be required to obtain appropriate insurance cover
- Reduced supervision required
- Increased productivity – less rework
- Reduced plant operation and maintenance costs
- Improved tender attributes
- Improved staff retention and company growth



ENROLMENT INFORMATION

ENTRY REQUIREMENTS

Entry is open with no prerequisites.

HOW IS THE QUALIFICATION COMPLETED?

The Roadmarking qualifications are completed through the recognition of relevant work skills and knowledge, as these are gained on the job. The trainee collects evidence of these skills and knowledge in a workbook, for verification and assessment against unit standards by an approved assessor.

The workbooks are provided by InfraTrain and explain what needs to be achieved to complete the qualification.

The following people play a key role in achieving a qualification on the job:

MENTORS

It is recommended that a mentor is assigned to the trainee. The mentor's role is to provide support and guidance. They may be a colleague, advisor or manager.

VERIFIERS

A verifier is a person with industry experience who is appointed by the employer. The verifier's role is to observe and confirm work has been completed to the required standard and the candidate is ready to be assessed.

ASSESSORS

The assessor is registered by InfraTrain and is assigned to the trainee after enrolment. The assessor's role is to assess work, which has been completed and verified, against the unit standards.

HOW LONG WILL IT TAKE?

Indicative completion times for the qualifications are:

National Certificate in Roadmarking (Assistant)
Level 2 or 3, 64 Credits – 12 months

National Certificate in Roadmarking (Operator)
Level 3, 102–107 Credits – 18 months

National Certificate in Roadmarking (Senior Operator)
Level 3–4, 102–117 Credits – 18 months

COST

Enrolment Fee – \$60 plus GST.

This is payable the first time a trainee is enrolled with InfraTrain. It is a one-off fee and covers enrolment in all future training with InfraTrain New Zealand Limited.

Subscription Fee

National Certificate in Roadmarking (Assistant)
Monthly \$50 plus GST or annual \$600 plus GST. If paid monthly, the Subscription Fee is payable for a minimum of 12 months.

National Certificate in Roadmarking (Operator)
National Certificate in Roadmarking (Senior Operator)
Monthly \$35 plus GST or annual \$420 plus GST. If paid monthly, the Subscription Fee is payable for a minimum of 18 months.

These fees do not include the cost of assessment which is determined with the assessor.

HOW TO ENROL

To enrol in any of the qualifications, call 0800 486 626 to arrange for an InfraTrain regional advisor to complete a Training Plan and Training Agreement.

The Training Plan can be viewed on www.infratrains.co.nz, under the Qualifications section.



TALK TO US

If you would like more information on the Roadmarking qualifications or would like to enrol in the qualification, please contact us.

0800 486 626
or email askus@infratrain.co.nz

InfraTrain New Zealand
Level 12, 40 Mercer Street, PO Box 2759, Wellington 6140

www.infratrain.co.nz